



SAMPSON COUNTY 911 & ES FACILITIES

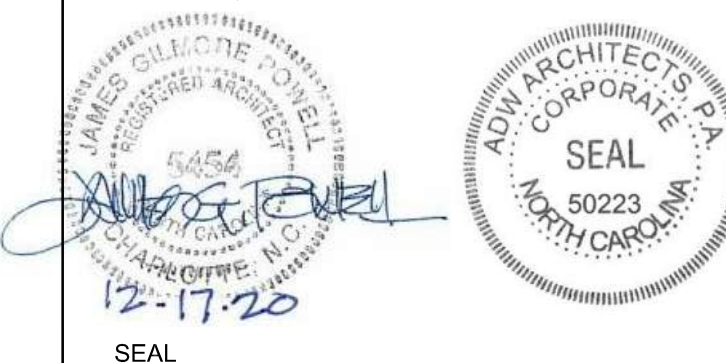
CLINTON,
NORTH CAROLINA

CONSTRUCTION
DOCUMENTS

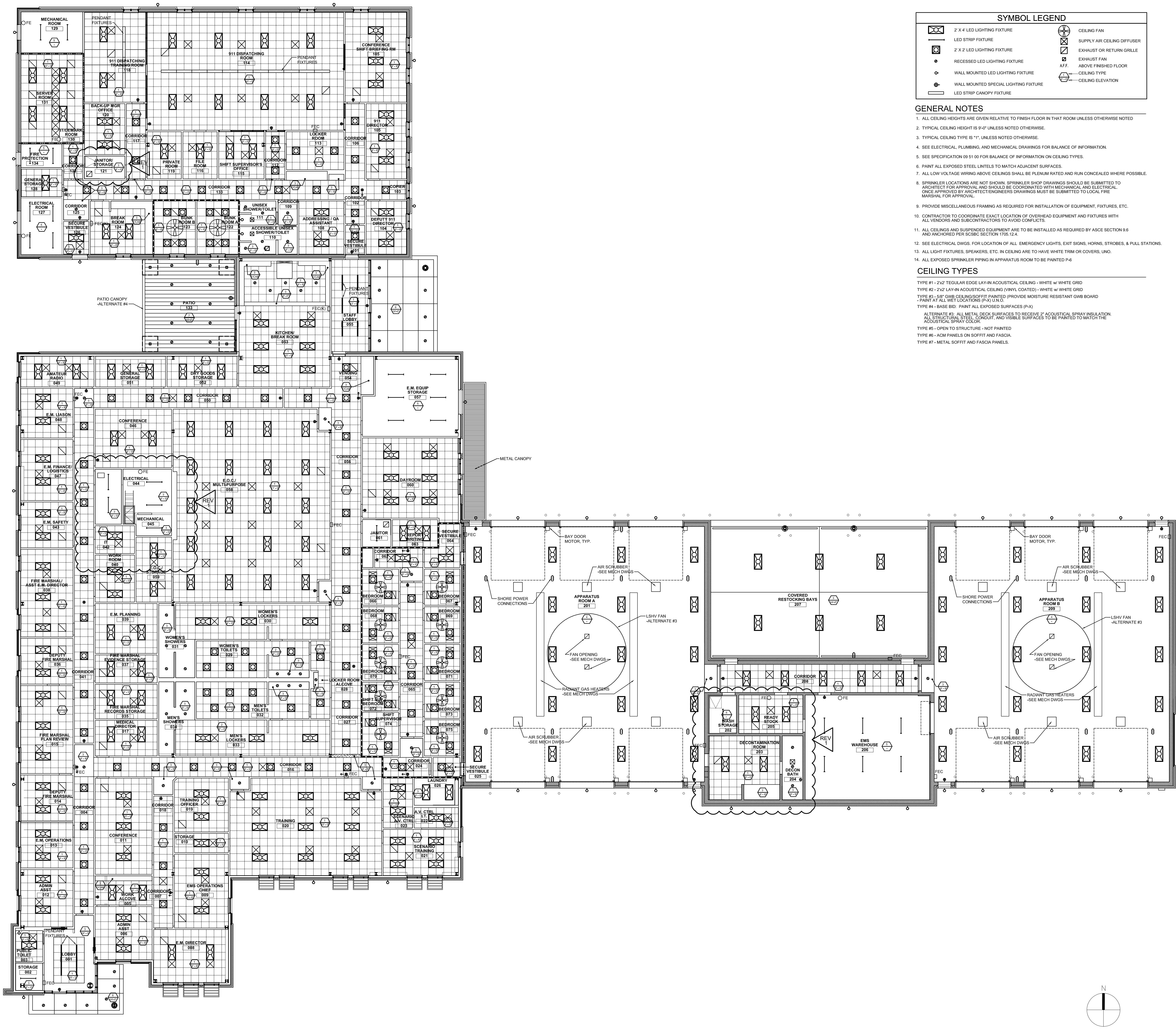
OVERALL REFLECTED
CEILING PLAN

DATE 12.04.2020
PROJECT NO 20003
REVISIONS
NUM. DATE DESCRIPTION:
REV1 12/17/20 REVISION 01

THIS DRAWING IS THE PROPERTY OF ADW ARCHITECTS, P.A. AND
SHALL NOT BE REPRODUCED OR COPIED IN WHOLE OR IN PART. IT
SHALL NOT BE USED ON ANY OTHER PROJECT OR GIVEN TO ANY
OTHER COMPANY OR AGENCY WITHOUT THE CONSENT OF ADW
ARCHITECTS, P.A.



SHEET NUMBER A800



SYMBOL LEGEND			
	2' X 4' LED LIGHTING FIXTURE		CEILING FAN
	LED STRIP FIXTURE		SUPPLY AIR CEILING DIFFUSER
	2' X 2' LED LIGHTING FIXTURE		EXHAUST OR RETURN GRILLE
	RECESSED LED LIGHTING FIXTURE		EXHAUST FAN
	WALL MOUNTED LED LIGHTING FIXTURE		A.F.F. ABOVE FINISHED FLOOR
	WALL MOUNTED SPECIAL LIGHTING FIXTURE		CEILING TYPE
	LED STRIP CANOPY FIXTURE		CEILING ELEVATION

- GENERAL NOTES
- ALL CEILING HEIGHTS ARE GIVEN RELATIVE TO FINISH FLOOR IN THAT ROOM UNLESS OTHERWISE NOTED
 - TYPICAL CEILING HEIGHT IS 9'-0" UNLESS NOTED OTHERWISE.
 - TYPICAL CEILING TYPE IS "1" UNLESS NOTED OTHERWISE.
 - SEE ELECTRICAL, PLUMBING, AND MECHANICAL DRAWINGS FOR BALANCE OF INFORMATION.
 - SEE SPECIFICATION 09 51 00 FOR BALANCE OF INFORMATION ON CEILING TYPES.
 - PAINT ALL EXPOSED STEEL UNITS TO MATCH ADJACENT SURFACES.
 - ALL LOW VOLTAGE WIRING ABOVE CEILINGS SHALL BE PLENUM RATED AND RUN CONCEALED WHERE POSSIBLE.
 - SPRINKLER LOCATIONS ARE NOT SHOWN. SPRINKLER SHOP DRAWINGS SHOULD BE SUBMITTED TO ARCHITECT FOR APPROVAL AND SHOULD BE COORDINATED WITH MECHANICAL AND ELECTRICAL ONCE APPROVED BY ARCHITECT/ENGINEERS DRAWINGS MUST BE SUBMITTED TO LOCAL FIRE MARSHAL FOR APPROVAL.
 - PROVIDE MISCELLANEOUS FRAMING AS REQUIRED FOR INSTALLATION OF EQUIPMENT, FIXTURES, ETC.
 - CONTRACTOR TO COORDINATE EXACT LOCATION OF OVERHEAD EQUIPMENT AND FIXTURES WITH ALL VENDORS AND SUBCONTRACTORS TO AVOID CONFLICTS.
 - ALL CEILINGS AND SUSPENDED EQUIPMENT ARE TO BE INSTALLED AS REQUIRED BY ASCE SECTION 9.6 AND ANCHORED PER ASCE SECTION 1705.12.4.
 - SEE ELECTRICAL DWGS. FOR LOCATION OF ALL EMERGENCY LIGHTS, EXIT SIGNS, HORNS, STROBES, & PULL STATIONS.
 - ALL LIGHT FIXTURES, SPEAKERS, ETC. IN CEILING ARE TO HAVE WHITE TRIM OR COVERS, UNO.
 - ALL EXPOSED SPRINKLER PIPING IN APPARATUS ROOM TO BE PAINTED P-6.

CEILING TYPES

TYPE #1 - 2'x2' TEGULAR EDGE LAY-IN ACOUSTICAL CEILING - WHITE w/ WHITE GRID

TYPE #2 - 2'x2' LAY-IN ACOUSTICAL CEILING (VINYL COATED) - WHITE w/ WHITE GRID

TYPE #3 - 5'x8' GWB CEILING/SOFFIT PAINTED (PROVIDE MOISTURE RESISTANT GWB BOARD - PAINT AT ALL WET LOCATIONS (P-1) UNO.)

TYPE #4 - BASE BID. PAINT ALL EXPOSED SURFACES (P-3)

ALTERNATE #3 - ALL METAL DECK SURFACES TO RECEIVE 2" ACOUSTICAL SPRAY INSULATION. ALL STRUCTURAL STEEL CONDUIT, AND VISIBLE SURFACES TO BE PAINTED TO MATCH THE ACOUSTICAL SPRAY COLOR.

TYPE #5 - OPEN TO STRUCTURE - NOT PAINTED

TYPE #6 - ACM PANELS ON SOFFIT AND FASCIA

TYPE #7 - METAL SOFFIT AND FASCIA PANELS.

GENERAL NOTE COORDINATION

OVERALL REFLECTED CEILING PLAN SCALE: 3/32" = 1'-0"

1